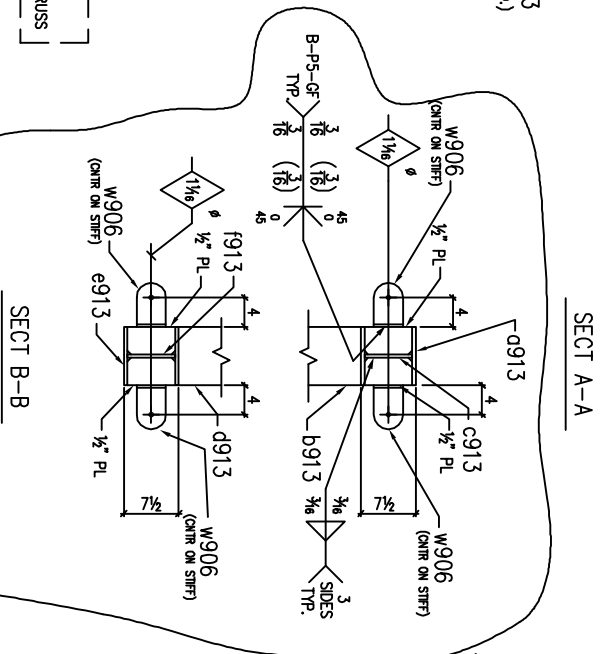
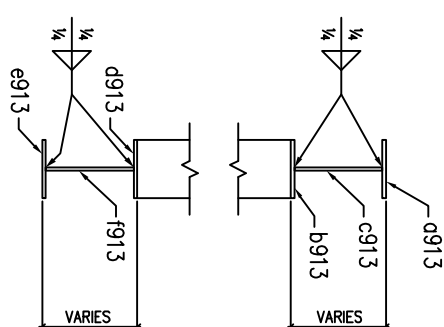
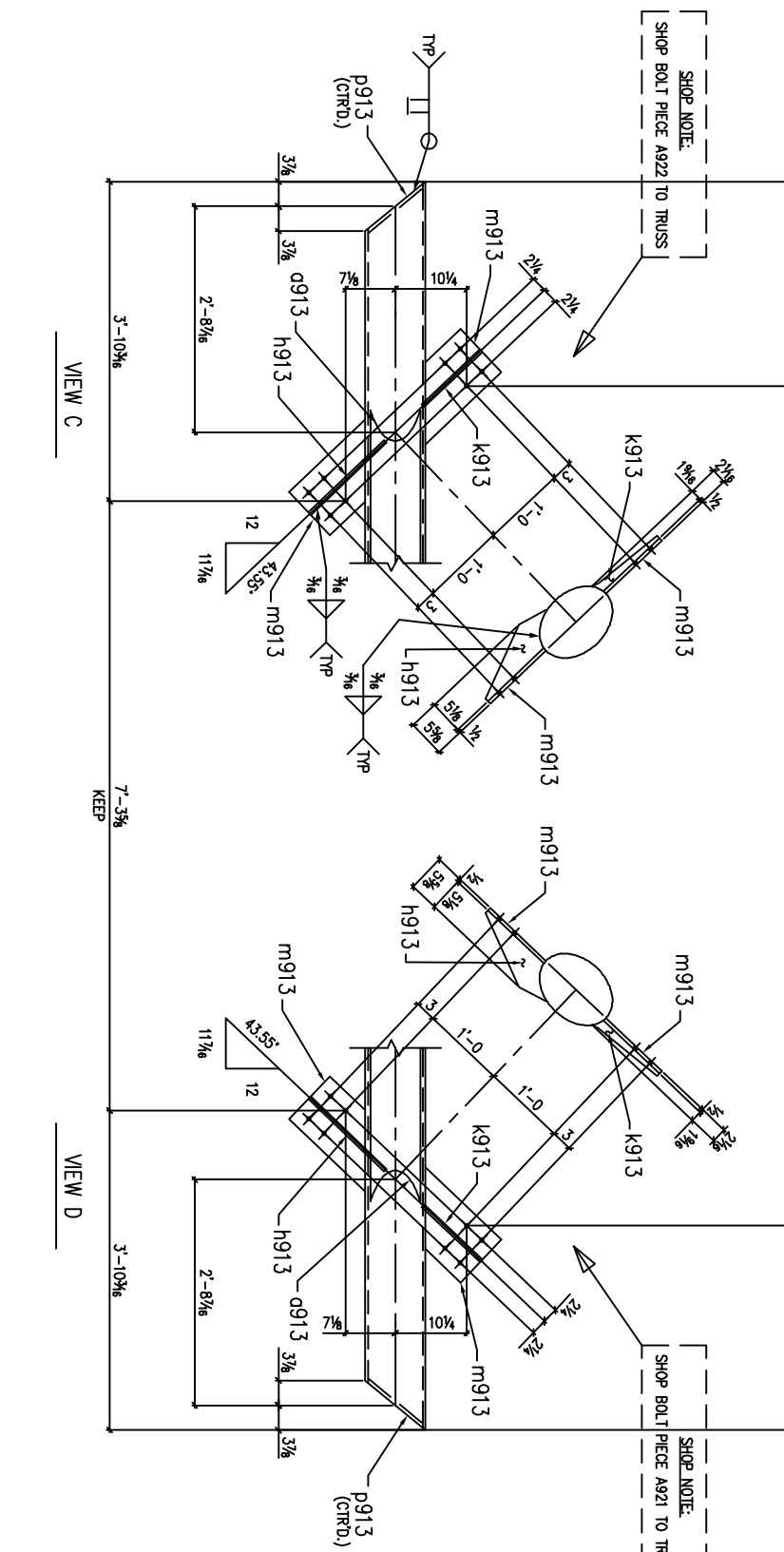
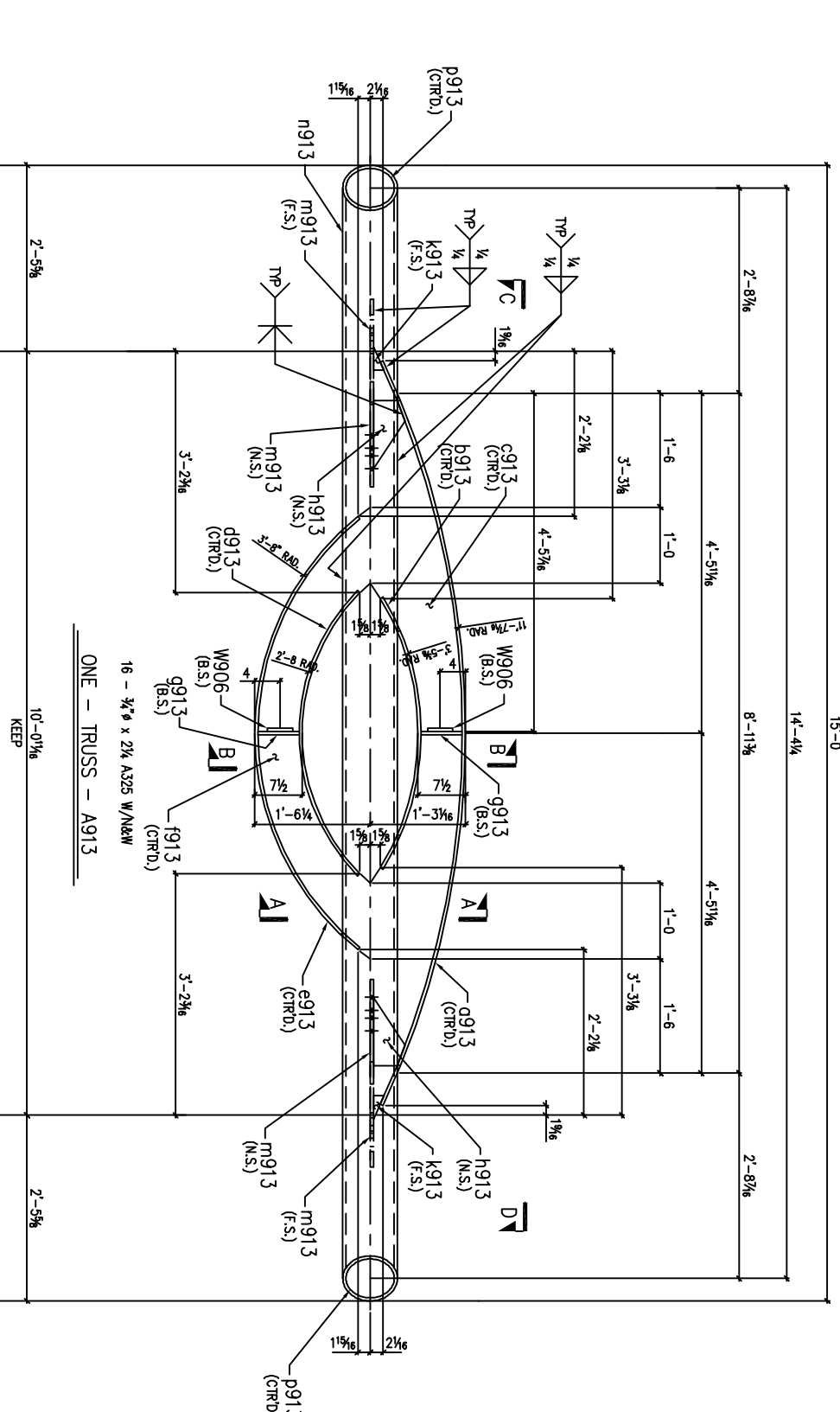


BILL OF MATERIAL

MARK	QTY	DESCRIPTION	LENGTH FT IN	REMARKS
A913	ONE	TRUSS		
d913	1	BAR 8x1/2	10	ROLLED, R=11'-7 1/4"
b913	1	BAR 8x1/2	3	ROLLED, R=3'-5 1/4"
c913	1	PL 1/2x10 1/4	8	8 3/4"
d913	1	BAR 8x1/2	4	ROLLED, R=2'-8"
e913	1	BAR 8x1/2	6	ROLLED, R=3'-8"
f913	1	PL 1/2x13 1/4	5	2 1/2"
g913	4	PL 1/2x3 1/2	0	6 7/8"
h913	2	PL 1/2x5 1/4	1	3"
k913	2	PL 1/2x1 1/4	0	11 1/4"
m913	4	PL 1/2x8 1/2	1	3 1/4"
n913	1	8" X-STRONG PIPE	15	BEV. 2E / A53
p913	2	BAR 8x1/2	0	11 BURN OUT / A36
w906	4	BAR 4x1/2	0	9 A36



SHOP NOTE:  
PRIMER: TNEMEC SERIES 90-97  
INTERMEDIATE COAT: TNEMEC SERIES 73  
TOP COAT: TNEMEC SERIES 10-75

MATERIAL: ALL PLATE (MATERIAL) A922 (UNO)	HOLES	13
WELDING ELECTRODE: E70XX LH	U.N.O.	Ø
SURFACE PREP: SSPC-SF6		
SHOP FINISH: SEE NOTE		

SHOP NOTE:  
WORK THIS DWG W/91388

DATE	REV	DESCRIPTION
	1	
	2	
	3	
	4	
	5	
	6	
	7	
	8	
	9	
	10	
	11	
	12	
	13	
	14	
	15	
	16	
	17	
	18	
	19	
	20	
	21	
	22	
	23	
	24	
	25	
	26	
	27	
	28	
	29	
	30	
	31	
	32	
	33	
	34	
	35	
	36	
	37	
	38	
	39	
	40	
	41	
	42	
	43	
	44	
	45	
	46	
	47	
	48	
	49	
	50	
	51	
	52	
	53	
	54	
	55	
	56	
	57	
	58	
	59	
	60	
	61	
	62	
	63	
	64	
	65	
	66	
	67	
	68	
	69	
	70	
	71	
	72	
	73	
	74	
	75	
	76	
	77	
	78	
	79	
	80	
	81	
	82	
	83	
	84	
	85	
	86	
	87	
	88	
	89	
	90	
	91	
	92	
	93	
	94	
	95	
	96	
	97	
	98	
	99	
	100	